

A Community Data Repository Working With The Library (+ University)



HARVARD DATAVERSE USE CASE

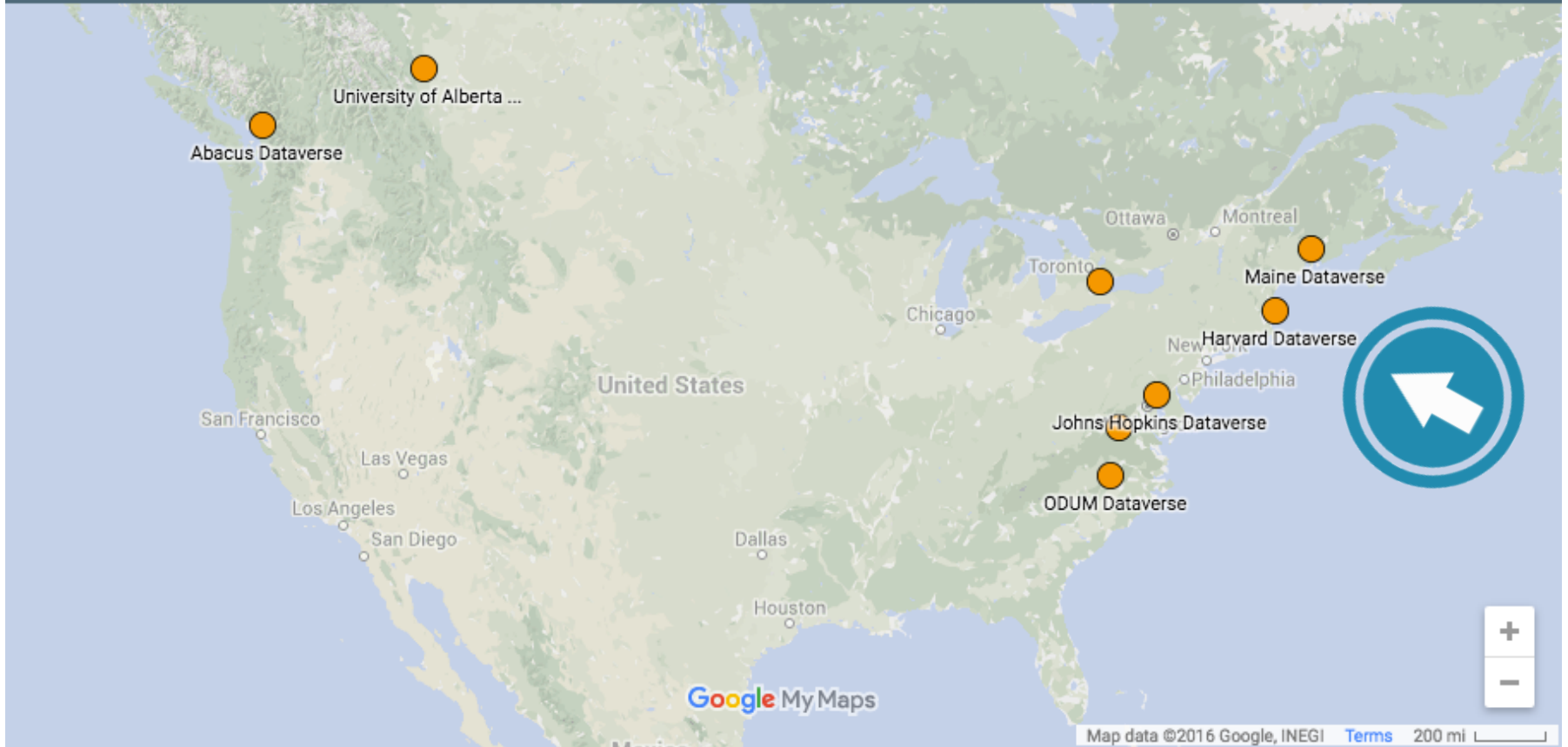
Eleni Castro, Research Coordinator
Institute for Quantitative Social Science (IQSS)
Harvard University

IASSIST 2016 - June 1



The Institute for Quantitative Social Science





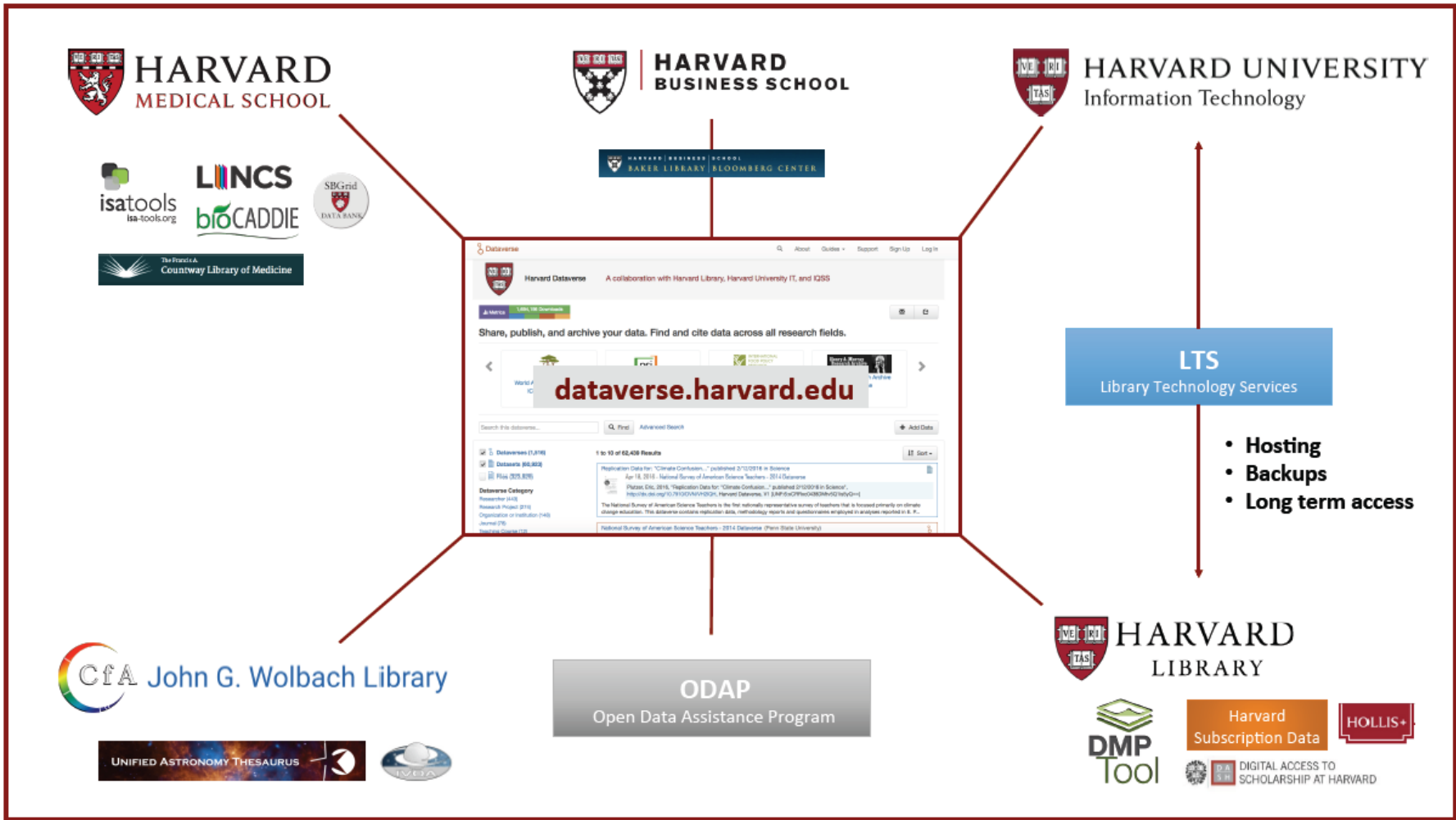
Harvard Dataverse Facts: <http://dataverse.harvard.edu>

- 1 of the 18+ installations using the open source Dataverse Project code
- 61,744 datasets // open to researchers worldwide from any discipline

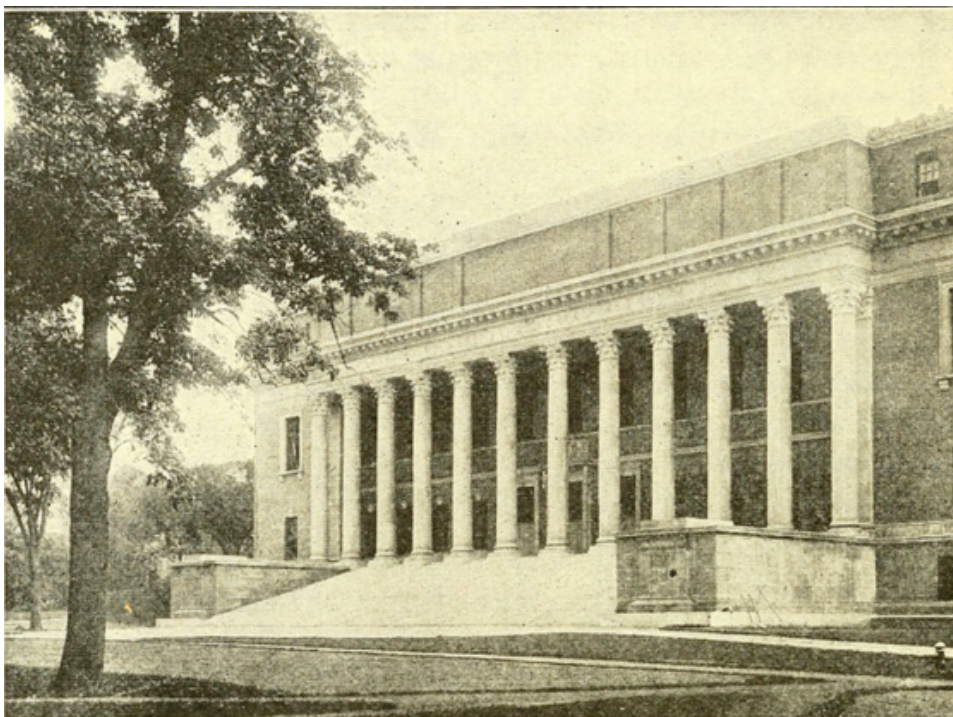
A Community Repository At Harvard



- Not just Harvard affiliated data
- Harvard Dataverse is also a place for:
 - Journals (Quarterly Journal of Economics, Political Analysis)
 - Research Organizations (International Food Policy Research Institute (IFPRI), Population Services International (PSI))
 - Other Institutions (MIT Libraries, Boston College)



Library + IT



Infrastructure



Since 2012:



- **Hosting**
- **Backups**
- **Long term access**



Integrations w/ Library Tools



**DIGITAL ACCESS TO
SCHOLARSHIP AT HARVARD**

LOGIN

A SERVICE OF THE OFFICE FOR SCHOLARLY COMMUNICATION

[▶ DASH Home](#) » [Faculty of Arts and Sciences](#) » [FAS Scholarly Articles](#) » [View Item](#)

Enhancing Democracy Through Legislative Redistricting

[Download Full Text](#) 

[Citable link to this page](#)



[OR Discuss](#)

Title: Enhancing Democracy Through Legislative Redistricting

Author: King, Gary  0000-0002-5327-7631 ; Gelman, Andrew
Note: Order does not necessarily reflect citation order of authors.

Citation: Gelman, Andrew, and Gary King. 1994. Enhancing democracy through legislative redistricting. *American Political Science Review* 88(3): 541-559.

Full Text & Related Files: [enhancing democracy.pdf](#) (470.9Kb; PDF) 

Research Data: <http://hdl.handle.net/1902.1/BNCOWNVERH>

Abstract: We demonstrate the surprising benefits of legislative redistricting (including partisan gerrymandering) for American representative democracy. In so doing, our analysis resolves two long-standing controversies in American politics. First, whereas some scholars believe that redistricting reduces electoral responsiveness by protecting incumbents, others believe that the relationship is positive and dependent on that side...

Search DASH

 Search DASH
 This Collection
[Advanced Search](#)

Browse

All of DASH

- Communities & Collections
- Authors
- Titles
- Keywords
- Harvard-affiliated Authors
- FAS Departments
- By Issue Date
- By Submit Date
-  RSS 2.0, Atom

This Collection

- Authors
- Titles
- Keywords
- Harvard-affiliated Authors
- FAS Departments

Everything

HOLLIS

Articles

Harvard Dataverse

Search

Advanced Search

New Search

Browse HOLLIS by...

Limit to: All items keywords anywhere

Replication data for: Direct versus Indirect Colonial Rule in India: Long-term Consequences

View Online

Locations & Availability

Details

Send to

Title: Replication data for: Direct versus Indirect Colonial Rule in India: Long-term Consequences

Summary: Citation: Laskhmi Iyer, "Replication data for: Direct versus Indirect Colonial Rule in India: Long-term Consequences", <http://hdl.handle.net/1902.1/15370> V1 [Version]

Language: Undetermined

Author / Creator: Laskhmi Iyer

Other title: Harvard Business School Dataverse.

HOLLIS Number: 014611593

Permalink: <http://id.lib.harvard.edu/aleph/014611593/catalog>

Source: HVD ALEPH

Links

- > Data file
- > HOLLIS Classic record
- > WorldCat record

Locations & Availability

Data Projects



Working Group (Library Stewardship Standing Committee)
Customize DMPTool for Harvard

Harvard Licensed Datasets in Harvard Dataverse



Coming soon: Harvard Dataverse Policies & Support Team

Domain Specific Libraries



(Expand Dataverse Metadata to Support More Disciplines)

The screenshot shows the top navigation bar of the Harvard College Library website. It includes a yellow question mark icon for 'Ask a Librarian', a dropdown menu for 'HOLLIS', a link for 'Databases', a link for 'Staff Login', a dropdown menu for 'Hours', and a search box. Below the navigation bar is the main header 'hcl.harvard.edu' in large white text on a dark background, with a breadcrumb trail 'Home > HCL Libraries'. The main content area features a collage of images of various library buildings, with the text 'HCL Libraries' overlaid. Below the images is a paragraph of text describing the Harvard library system.

Ask a Librarian HOLLIS Databases Staff Login Hours Search

hcl.harvard.edu

Home > HCL Libraries

HCL Libraries

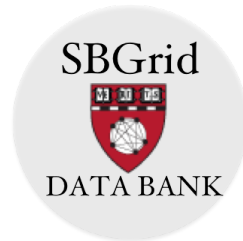
There are over 70 libraries at Harvard that comprise the Harvard library system, with combined holdings of over 16 million items. More than 11 million of those items are part of the collection of a centrally administered system within the Faculty of Arts and Sciences that is referred to as the Harvard College Library (HCL) and includes the libraries and special units below. See the [Harvard Libraries](#) site for a complete listing of all University libraries.

Life Sciences

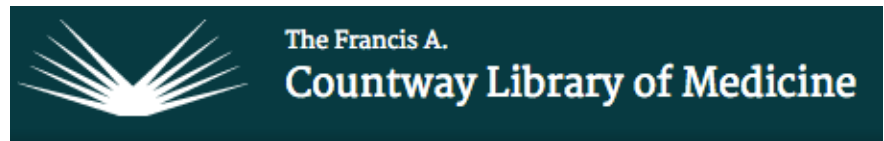


HARVARD
MEDICAL SCHOOL

Software + Metadata Extension



Data Management Collaboration



The Center for the History of Medicine

HMS Research Data Management WG

Astronomy



John G. Wolbach Library

Software + Metadata Extension

1



Virtual Observatory Resource Schema

2

Automatically ingest metadata from FITS files.

3

Coming soon:

UNIFIED ASTRONOMY THESAURUS



Business + Management



Dataverse Q About Guides Support Sign Up Log In

Harvard Business School Dataverse (Harvard University) [Home Page](#)

[Harvard Dataverse](#) > **Harvard Business School Dataverse**

Harvard Business School Dataverse is HBS' online repository for faculty and doctoral student research data. HBS Dataverse is managed by HBS Knowledge & Library Services. For more information, please visit the [KLS Research Data Program website](#).

Search this dataverse... Q Find [Advanced Search](#) + Add Data

Dataverses (0)
 Datasets (29)
 Files (448)

Publication Date
2015 (7)
2012 (4)
2013 (4)
2007 (3)

1 to 10 of 29 Results Sort

HBS Survey on U.S. Competitiveness (2012-2015)
May 10, 2016
Porter, Michael E.; Rivkin, Jan W., 2016, "HBS Survey on U.S. Competitiveness (2012-2015)", <http://dx.doi.org/10.7910/DVN/MIYCIR>, Harvard Dataverse, V1

The HBS survey on U.S. Competitiveness (2012-2015) was conducted with ~11,000 HBS alumni between August 29, 2012 and September 27, 2012, in December 2013, and between April 23, 2015 and May 26, 2015. These surveys examine the perceptions and experiences of alumni from HBS's MBA a...

University-wide collaboration



Open Data Assistance Program (ODAP)



HARVARD UNIVERSITY

HARVARD.EDU

ODAP

The Open Data Assistance Program at Harvard

Many Harvard researchers are subject to open-data policies from the journals publishing their articles or the agencies funding their research. Many others simply want to open up their data to realize the benefits of transparency, collaboration, data citation, research acceleration, and reproducibility. ODAP is a program to help them.

ODAP will offer advice and instruction on how to deposit data files in the [Harvard Dataverse](#). When privacy is an issue, ODAP will offer advice on how to make data files as open as privacy constraints will allow. Since anyone in the world may deposit in Dataverse, ODAP's online assistance should help researchers everywhere. However, when online assistance isn't enough, ODAP staffers and volunteers will offer personal assistance to Harvard faculty, students, fellows, and postdocs. We encourage other institutions to offer personal assistance to their own researchers as well, and can work with them on how to do that.

[Benefits of Sharing Data](#)

[How to Share Data](#)

[Training](#)

[Open Office Hours](#)

[Open and Restricted Data](#)

[Harvard Data Policy](#)

[Frequently Asked Questions](#)

Open Data At Harvard



HARVARD UNIVERSITY

HARVARD.EDU

DATA AT HARVARD UNIVERSITY

Access to public sources of Harvard University institutional data

Welcome to Harvard University's Data Sharing Portal

The institutional data available on this site are being shared to encourage the creativity and innovation of the Harvard University community. In this collection you will find both datasets that are open to the world, and some that are only accessible to members of the University. Please check in often to see what new sources of data we add to the collection.

We look forward to seeing what you can create

Thank You!



Contact:

- ecastro@fas.harvard.edu or support@dataverse.org
- Website: <http://dataverse.org>
- Twitter: [@dataverse.org](https://twitter.com/dataverse.org)

